

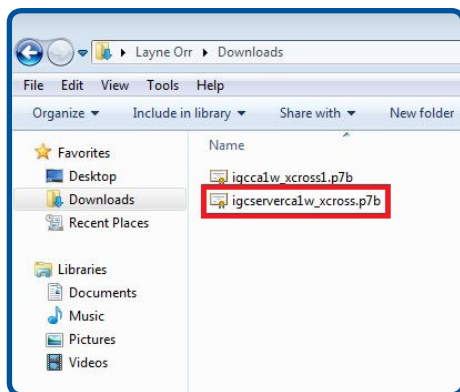
IGC Device CA Certificate Root Chain Download Instructions

Please note that this IGC CA Root Chain Download is compatible with IGC Device Certificates only.

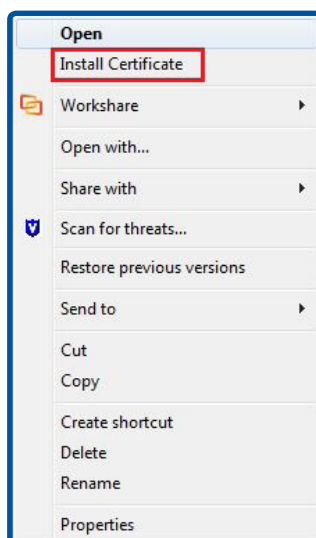
If you need the Root Chain Certificates for an IGC Individual or Affiliated certificate, you will need to use the IGC CA Root Chain Certificate Download Instructions.

Before you can use your digital certificate; you must install the Root Certificate Chain in your browser.

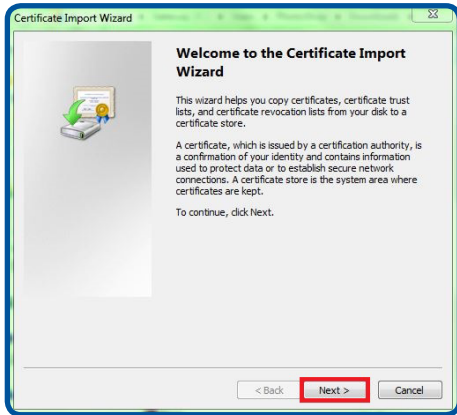
1. Click on IGC Device CA Root Chain Certificate Download link and save to your Windows desktop.
2. Locate the downloaded file on your Windows desktop. The icon looks like a paper certificate and the file has a .p7b extension, which you can see if you hover over the file.
(Note: You may have to minimize or close other programs to get to the Windows desktop.)



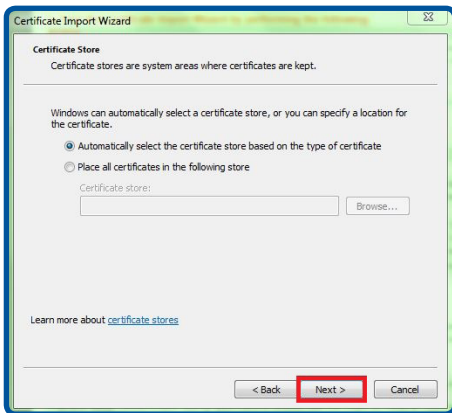
3. Right-click the file.
4. A pop-up menu will appear. Click on **“Install Certificate”**.
The Certificate Import Wizard will appear.



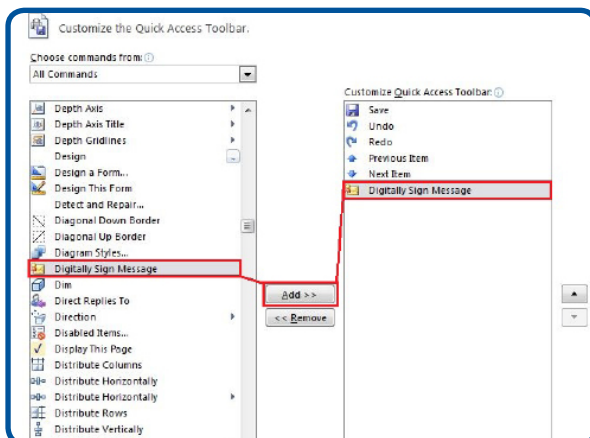
5. Click **“Next”**.



6. By default, the button is checked for: **“Automatically select the certificate store...”**
Keep the default selection. Click **“Next”**.



7. Click **“Finish”**.



8. If prompted: “Do you want to ADD the following certificate to the Root Store?” Click “**Yes**”. You will receive a message saying: “The import was successful”.
9. Click “**OK**” to close the notification window.

